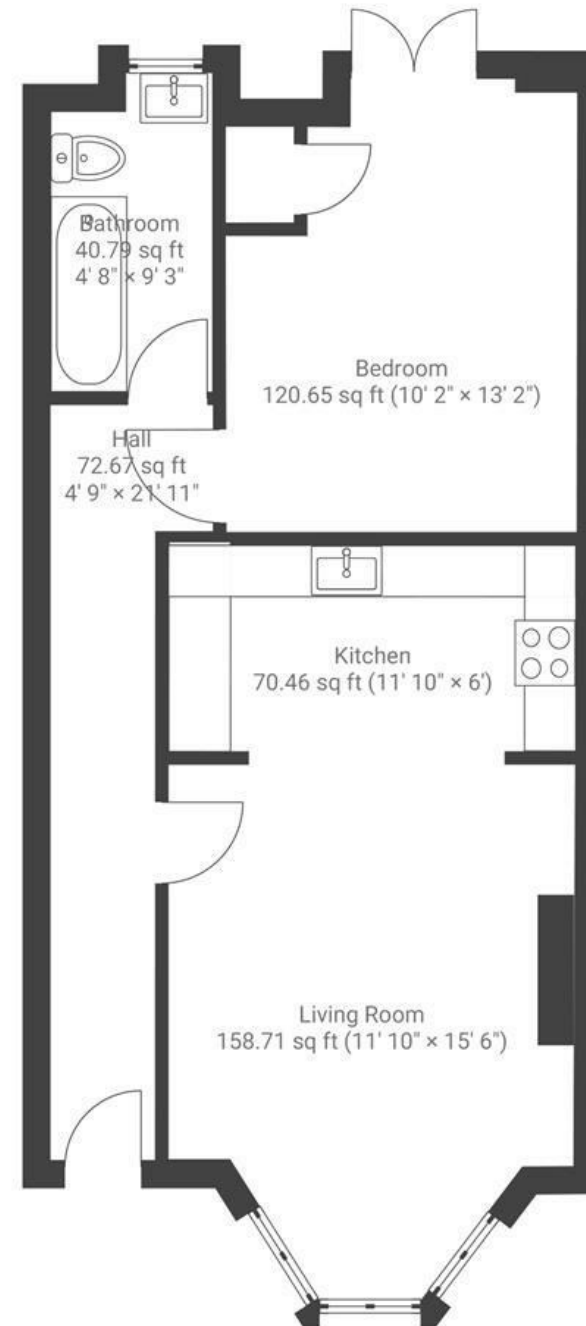


# Arley Hill

## COTHAM

APPROXIMATE FLOOR AREA  
53.7 SQM / 579 SQFT



**Boardwalk**

# Arley Hill

, BRISTOL



£285,000



BS6 5PJ



1 Bedrooms



1 Bathrooms

*'What I love about living here is that I'm in walking distance to restaurants, cafes, shops, greengrocers, the yoga studio, the gym, ... And when I come home and close the door, this is my quiet and peaceful space. My favourite memories usually involve my private garden, from relaxing with a book there, to BBQ-ing with friends. Waking up in a bedroom with a view of the garden every morning is also lovely.'*

